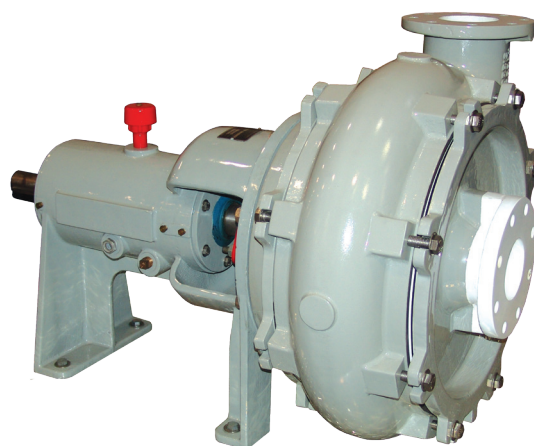


Specialty Wastewater Products

MORRIS 6100, SHONE EJECTORS YEOMANS 3000/8000

Grundfos offers a line of specialty products through its Yeomans, Morris, and Shone product brands. These are pumps made for specific applications in both municipal and industrial waste applications. These pumps are designed specifically for grits, slurries, scum, sludge, and industrial waste. From cup style recessed impellers, pneumatic pots, and column pumps these specialty products fill niche voids left by other types of pumps.



Key Features and Benefits

Morris 6100 - Recessed Impeller Hard Metal Pump

- Hi chrome wetted parts with 650 Brinell hardness
- Bi-directional impeller and volute
- Removable suction plates and backing plates for easy maintenance
- Multiple sealing options to go on the hook style shaft sleeve
- Heavy duty bearing frames

Shone Ejectors - Pneumatic Pump

- Simple batch cycling; typically sized for 30 second filling / 30 second discharge
- Variable volume pumping while preserving consistent discharge scouring velocities
- No springs, diaphragms, seals or bearings to wear out
- Duplex units can be mechanically interlocked and/or alternated
- No electrical devices at or near the pumped media

Yeomans 3000 and 8000 - Suspended Wet Pit Pumps

- Multiple bearing lubrication options
- Several different column bearing material options
- Stainless steel, bronze and cast iron wetted components available
- For both screened and unscreened media
- Motor stands fitted for NEMA motors

APPLICATIONS

- Municipal waste
- Industrial waste

Specialty Wastewater Products Technical Data

6100 Information	
Flow, Q:	max. 4600 gpm
Head, H:	max. 150 ft
Horsepower:	200 hp
Discharge diameter:	2 in. to 8 in.
Solids passage:	max. 8 in.

