

Solids Handling Dry Pit Pumps

GRUNDFOS SD SERIES

Grundfos' offering of the SD (Sewage Dry-Pit) line of large, solids-handling, dry-pit pumps are engineered to handle the demands of a wastewater or storm water collection and treatment system.

We have consolidated our Yeomans, Chicago and Morris brands into one Grundfos SD line of pumps to improve on our industry leading quality and exceed our customers' expectations.

Grundfos SD pumps are the ideal choice for pumping sewage, sludge, corrosives, caustics and industrial by-products. Heavy duty industrial quality, superior design features and a wide range of materials and options combine to provide the user with the ultimate in long service life and system reliability.

Key Features and Benefits

- SmartTrim Impeller adjustment to maintain peak efficiency
- Impellers for high head, medium head and low head applications
- Designed to handle large abrasive solids
- Made with ASTM 48 Class 35 Cast Iron construction; material options for casing and impeller that include Ductile Iron, 3% Nickel cast iron, Duplex Stainless Steel (CD4MCu), and AISI 316 SS
- Heavy duty bearings for industry leading bearing life
- AISI 4140 steel shaft as standard with 420 SS shaft sleeve
- Multiple sealing options ranging from packing to split seals
- Motor mounting options available include vertical pedestal mounted, vertical open shaft and horizontal base mounted
- Removable suction cover allows easy maintenance access to pump internals
- Discharge size ranging from 4" to 54"
- Performance testing on every pump comes standard at the following test levels:
 - HI grade 3B standard for less than 13HP
 - HI grade 2B standard for greater than 13HP
- SD Series is now available to size and select in Grundfos Product Center (GPC)

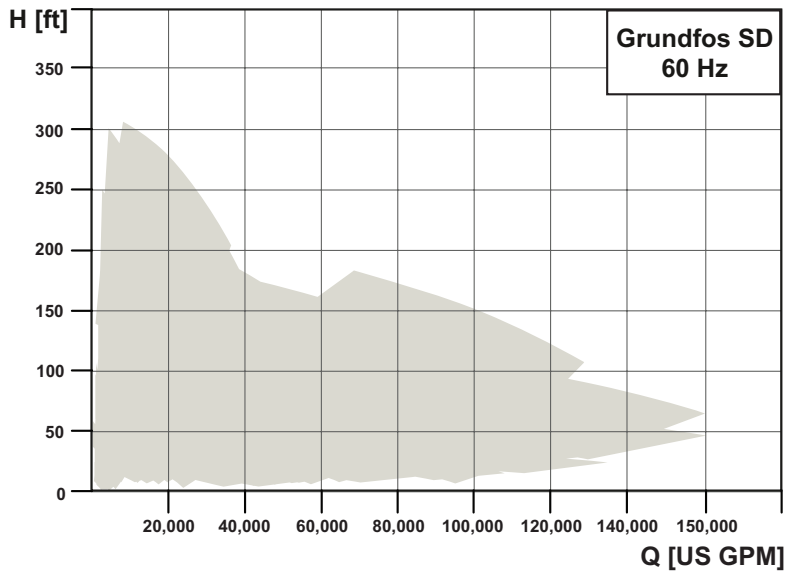


APPLICATIONS

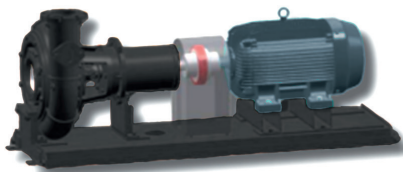
- Raw water intake
- Stormwater
- Wastewater treatment
- Municipal wastewater
- Commercial wastewater
- Industrial wastewater

Grundfos SD Technical Data

Grundfos SD Information	
Flow, Q:	max. 150,000 gpm
Head, H:	max. 300 ft.
Horsepower.:	max. 3000 hp
Discharge diameter:	4 in. to 54 in.
Solids passage:	max. 9.75 in.



Mounting Orientations



Horizontal Ball Bearing (HBB)

A fabricated steel base supports both the pump and driver in a horizontal position.



Vertical Pedestal Mounted (VPM)

The motor is directly mounted and connected to the pump assembly.



Vertical Open Shaft (VOS)

A configuration when motor location requires remote mounting at higher elevation due to flooring or space requirements.